

DELIVERING INTEGRATED FIRE AND HEALTH INTERVENTIONS

David Russel
Assistant Chief Fire Officer



DELIVERING INTEGRATED FIRE AND HEALTH INTERVENTIONS **NATIONAL PERSPECTIVE**

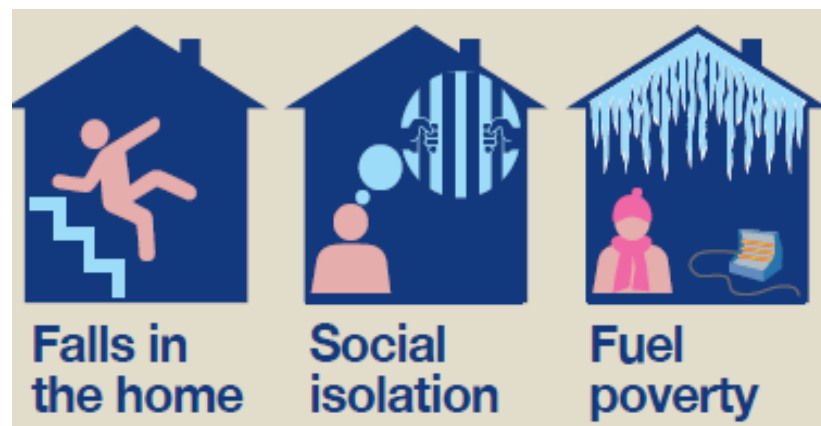
FIRE AND RESCUE RECOGNISE THE CHALLENGE

- Demand for health and social care is rising.
- Increasing numbers of children and adults with long term conditions.
- Ageing population.
- Placing **prevention** at the centre of all that we do is critical.
- Ambition for FRS to play an increasing role in supporting the health and wellbeing agenda.

WHY IS THIS IMPORTANT?

Underlying and common risk factors for fire and poor health:

- Substance misuse
- Smoking materials
- Living alone
- In receipt of social services / agency support
- Physical disability / lack of mobility
- Mental Health
- Prescribed medication
- Cold homes



WHY SHOULD FIRE BE A HEALTH ASSET?

- **Common risk factors** between health and FRSs which increase demand.
- **FRS move towards prevention** – significant resource shift towards preventing rather than reacting to fires.
- **Opportunity to supplement [not replace] existing health support** - 700,000 home visits carried out by FRS across England - offer a more holistic approach?

**FIRE as a
HEALTH
ASSET**





DELIVERING INTEGRATED FIRE AND HEALTH INTERVENTIONS **NATIONAL PERSPECTIVE**

THE JOURNEY SO FAR...

October 2014

- Recognition that Health and Social Care is facing the same challenge as the FRS did 10 years ago – moving from chasing demand to getting serious about prevention.
- Recognition that FRSs could help with the demand.

January 2015

- NFCC met with Simon Stevens [NHS England] – agreed to work together.

April 2015

- Fire Health Summit – April 2015 [NHS England, NFCC, Public Health England, Age UK and the LGA].

THE JOURNEY SO FAR...

October 2015

- Published Consensus Statement – encourage local areas to develop joint strategies for intelligence-led early intervention and prevention.
- Accompanied by ‘design principles’ for **Safe and Well Visits**.

April 2017

- Establishment of the Health Co-ordination Committee of the NFCC.





DELIVERING INTEGRATED FIRE AND HEALTH INTERVENTIONS NATIONAL PERSPECTIVE



Health Strategy 2015-19
Fire and Rescue Services as a Health Asset



CFOA
Chief Fire Officers
Association



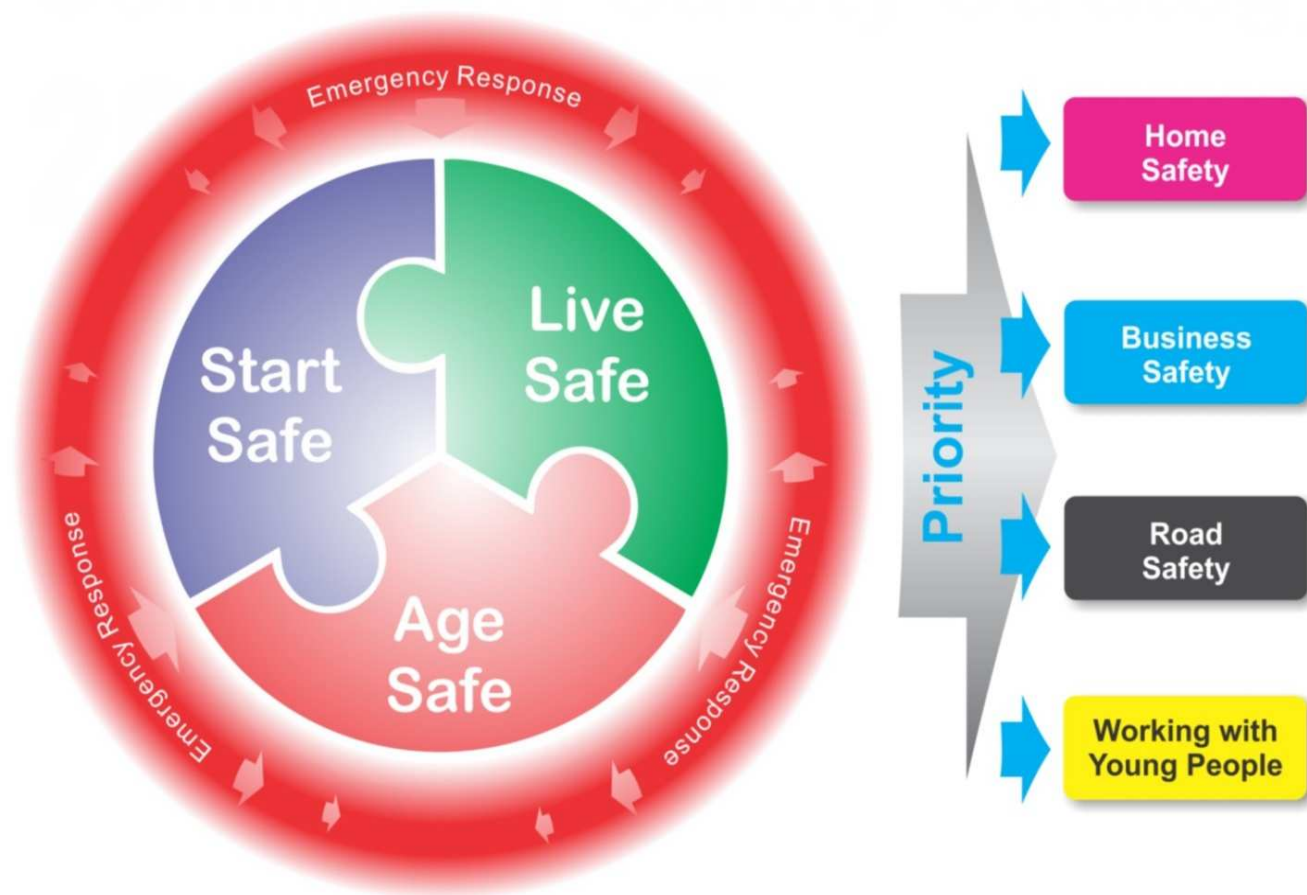
Beyond fighting fires

The role of the fire and rescue service
in improving the public's health



Case studies

Community Safety - Our Operating Framework



OUR CURRENT OFFER...

- **Safe and Well Visits** – 25,000 visits per year [high risk homes]:
- Falls Prevention
- Social Isolation
- Dementia
- Diabetes
- Healthy Homes/Winter Pressures
- Home Security
- Mental Health



*[*Video link to introducing Safe and Well Visits](#)*

DELIVERING INTEGRATED FIRE AND HEALTH INTERVENTIONS **LANCASHIRE PERSPECTIVE**

OUR CURRENT OFFER...

- Education Programmes:

Early Years Foundation

Year 2 Child Safe

Year 6 Road Sense

Year 7 Teen Safe [Module Based]

SENDsafe

Fire Intervention Response Education Scheme [FIRES]

Water Safety 'Dying for a Dip'





DELIVERING INTEGRATED FIRE AND HEALTH INTERVENTIONS **LANCASHIRE PERSPECTIVE**

OUR CURRENT OFFER...

- Princes Trust Team Programme [27 teams a year].
Largest FRS Delivery Partner of PT in the Country.



Prince's Trust

- Fire Cadets [7 Units].

Darwen

Blackpool

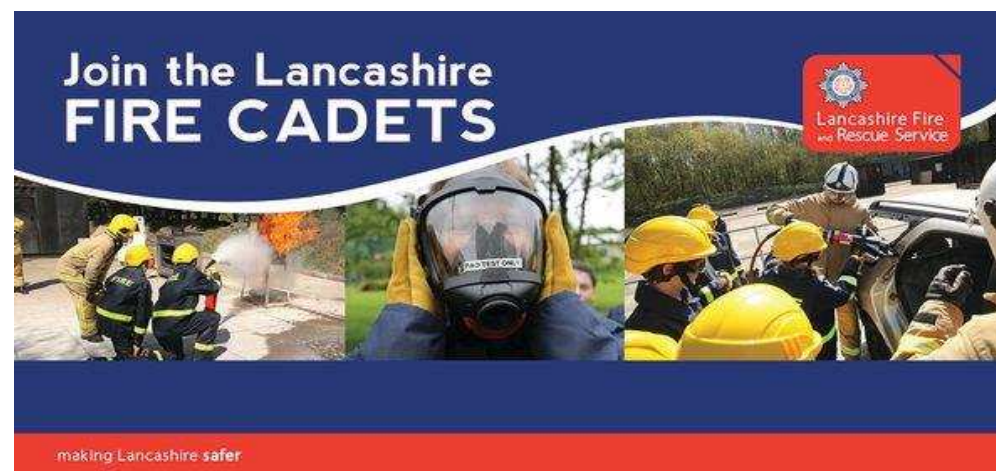
Bacup

Skelmersdale

Preston

Preesall

Carnforth



DELIVERING INTEGRATED FIRE AND HEALTH INTERVENTIONS LANCASHIRE PERSPECTIVE

OUR CURRENT OFFER...

- Deliver Fire Training to all LCC Commissioned Care Providers.
- Dementia Work – ‘Guardian Angel’ devices.



Dementia Friends Awareness Session

FREE
EVENT

Come along to our free dementia awareness session. We will provide you with a greater understanding of the condition and discuss some of the little things you can do that can make a big difference to those you meet who are living with dementia.

No need to book, just turn up! We'll see you there.

Blackburn Fire Station Tuesday 4th September
Byrom Street, Blackburn 3pm and 6pm (sessions last one hour)



THE
HERBERT
PROTOCOL
Safe & Found

Download the form and find out more at:
Lancashire.police.uk/Herbertprotocol





DELIVERING INTEGRATED FIRE AND HEALTH INTERVENTIONS **LANCASHIRE PERSPECTIVE**

OUR FUTURE OFFER?

- Shift in the mind set of partners towards thinking... **'Fire as a Health Asset'**.
- Improve data and information sharing between fire and health.
- Safe and Well Visits - increase the number of partner referrals through the development of strategic ISAs *[every £1 invested by the fire service on a S&WV saves a min. of £2.52 healthcare spend]*.
- Further develop our Safe and Well Visits e.g. atrial fibrillation testing, cholesterol monitoring etc – make every contact count.



OUR FUTURE OFFER?

- Fire stations as community assets - exercise classes for health and wellbeing' e.g. individuals at risk of a fall.
- Utilise LFRSs youth and education engagement programmes to deliver on health and wellbeing issues.
- Campaigns – winter-related illness and safety?
- Commissioned Services? e.g. Humberside FRS – deliver a falls intervention response safety team – sent to falls screened by the Ambulance Service as 'non-urgent'.



Thank you for listening